



This Issue

- WQ Official Business
- Workshop Schedule is in flux
- WQ Officer & Chairman Reports
- Call for Entries
- Neighborly Guild Calendar
- WQ Member Articles

Safer at Home Edition #2



Up Coming Workshops & More



- Traditionally, WQ hold our Executive Board elections in person at the May Quarterly Meeting, but these are not normal times and for everyone's safety we are not holding an in-person meeting. The WQ Bylaws allow for voting by Email, so the election will be remote voting by email. Included in the newsletter are details on voting for the 2020-2021 Executive Board, the 2021-2021 Budget, and extending the term of a few Executive Board members beyond their 2-year commitment.
- The May WQ Quarterly Meeting "Thrilling Threads" and the May workshop "Thread Play Sampler" both with Shawne Miller have been CANCELLED due to the coronavirus Safer At Home County wide rules.
- Join the **WQ "Virtual Show and Tell"!!!** Our wonderful website manager, Sally Wright, will post pictures on Facebook of quilts that you would like to share with other member until we can all share our exciting projects in person. Send photos to Sally at: westsidequilters@yahoo.com or post them yourself as a visitor. Additionally, some members are sharing their Mystery Quilt progress on Facebook.
- Workshop schedule in flux until Stay At Home orders are lifted, we hope it is soon
- Membership renewal has been moved to August.



PRESIDENT'S MESSAGE

Hope everyone is well and safe at home.
It is a most unbelievable time we are living through now.
We are all at home either waiting for food delivery or going quickly to the grocery store dressed with masks and gloves.
This is a time we will never forget.

We now have the luxury of time and the perfect skill to fill that time.

Many of you are sewing masks for your doctors, your neighbors and friends. Thank you, your ability is making the lives of everyone a little safer.

Westside Quilters are continuing to sew philanthropy quilts.

Some members have joined a group that is sewing a mystery quilt, and many are practicing machine quilting.



We remain committed to our family and our community. **THANK YOU**

We will be voting for our new officers by email, you will find the information in this newsletter. Please be sure to vote for our slate of Westside Quilters officers for the coming fiscal year.

Thank you to those who have served as our officers and those who will serve in that capacity for the coming fiscal year.

Roberta Walley
President Westside Quilters of Los Angeles





WESTSIDE QUILTERS

Slate of Officers for Westside Quilters Executive Board 2020 - 2021

Following is the proposed Slate of Officers for 2020 - 2021. We are lucky as a group to have dedicated people who are willing to step up and ensure that our guild runs smoothly. Thank you to all those who agreed to be on the slate this year, and I encourage others to say "YES" in the future.

President: **Marianne Simpson**

Vice President: **Barbara Marom-Pollack**

Secretary: **Terrie Dorio**

Treasurer: **Karynn Dittmar***

Programs: **Pat Karasick, Del Walker, and Cindi Garacochea**

Philanthropy: **Virginia Marshall*, Nancy Kawahara, and Lisa Drew***

Newsletter: **Debbie Nussbaum***

Membership: **Luann Jaffe***

Website Manager: **Sally Wright***

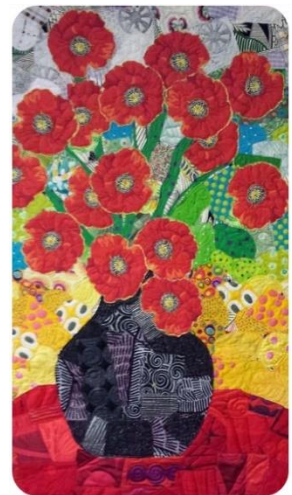
Voting for the new slate will be done by email this year in accordance with recent changes in our bylaws. If there are any additional nominations for these offices, please send them to the Executive Board at Westsidequilters@yahoo.com by May 9th.

An email ballot will be sent out on May 11th. Please be sure to return it promptly with your vote by May 22nd. The ballot will also include a resolution to allow the officers above marked by an asterisk to continue in their office beyond their original 2 year term. The email ballot will also include voting to approve the 2020-2021 Budget.


Thank you for your help during these trying times.

Respectively submitted,

Barbara Marom-Pollack
Vice President



The **WQ Fiscal Year ends the end of May** and the WQ membership needs to vote to adopt the 2020-2021 Budget (see below).

 WESTSIDE QUILTERS			
Westside Quilters Budget for FY 20-21			May, 2020
			Budget
			FY 2020-21
INCOME			
Membership Dues		6500	**
Workshop Fees		3000	6 X 10 X 50
Guest Fees		50	
Donations		500	
Holiday Tea		300	
Fabric Sale		500	
Amazon		200	
TOTAL INCOME		11050	
EXPENSES			
Accounting Fees		300	
Administration		500	
General Meeting Expense		1600	(a)
Government Fees		50	
Donations		650	
Mileage reimbursement		250	
Philanthropy Expenses		250	
Post Office Box Rental		150	
Printing/Promotion		300	
SCCQG Dues & Insurance		340	
Square Up Fees		100	
Website		250	
Workshop Expenses		6400	(b)
TOTAL EXPENSES		11140	
NET INCOME/LOSS		-90	
**assuming we have our May, 2021 meeting where we will collect some membership fees for FY2021-22			
(a) based on 3 speakers @ \$300, room rent @ \$200, travel @ \$100			
(b) based on 6 workshop teachers @ \$600, 2 room rent @ \$200, travel/expenses @ \$400			

What's going on with Westside Quilters Programs?

By Pat Karasick

So far, just like the rest of California we have canceled everything. No meetings, no gatherings, or classes up until August. We are waiting like the rest of the State to see if we can safely meet in August. Fingers crossed.

In the meantime, there is plenty of opportunities on the internet. Some of you may have and are currently participating in Pam Overton's Mystery Quilt projects. You can jump in at any time, just email her at pam@travelingquilters.com

Alex Anderson is launching an online class doing her pattern from 2018, Sequoia Sampler. The fabric bunch that went with it is sold out, but most of us didn't need any extra fabric anyway. She is encouraging you to stitch along with fabrics from your stash. You can purchase the pattern or download it from The Quilt Show. The quilt is manageable size at 36"X42". She does three online classes a week which you can access at any time. The Quilt Show is having a sale on membership, \$20.00 for 6 months.

American Quilter's Society is having a sale on their online classes. Lots of different categories with topnotch teachers. I took a class with Bethanne Nemesh, if you can Feather, you can Freehand. World class instruction in the comfort of your own home. Tiffany Hayes, one of our "postponed" teachers has a kit and pattern for Wintertide on the American Quilter.com. This is a large quilt 74"x 94". Fabric is also available for purchase.

Cindy Needham, another fabulous quilting teacher is offering a free class on her Facebook page. I did Design ! with her the other day. I have taken class with her in person and can personally recommend this teacher and this class.

If you want to take a break from making masks, American Patchwork and Quilting has a million-pillowcase challenge going on. Quilts in a Day is supporting this venture by offering pillowcase kits 40% off.

Shabby Fabrics has great tutorials with fun projects. Jenny Doan, of Missouri Star has lots of tutorials available. Eleanor Burns has lessons to go with most of her books, just put her name into YouTube.

Of course, you could always finish one of the quilt tops that you have started from a past Westside Quilters class. Oh, am I the only one with unfinished tops?

Sewing Arts Center has an online shop, just in case you run out of supplies.

Be safe, wash your hands, stay at home. You individually helping us all come out of this alive. Please send photographs of completed projects to Sally Wright so that she can put them on the website. Superior Threads is also encouraging you to post on #Together We Sew, a Facebook group sharing their quarantine quilts.

If you haven't seen DIY Face Mask Tutorial with Kay on YouTube, it is worth a quick peek, especially if you are having trouble with your mask production.

Happy Stitching! We are so lucky to have a craft to keep us busy, productive and creative.



PHILANTHROPY

Hello fellow quilters!

As promised, we are providing a fun sewing project for you to work on while you're at home. Please consider making a few star blocks (or several!) for our *Giving for Thanksgiving* philanthropy day planned for later this year. As usual, we will distribute finished quilts to local charities. Attached to this newsletter is a one-page instruction on how to make a simple large 10½ inch block which can be sewn with any scraps you have. See the sample star quilt Virginia made from her batik scraps--beautiful!! Special thanks to Virginia and thanks to all of you for helping!

Stay strong and safe,
Lisa Drew, Virginia Marshall, and Nancy Kawahara



Westside Quilters Philanthropy Star Block 2020

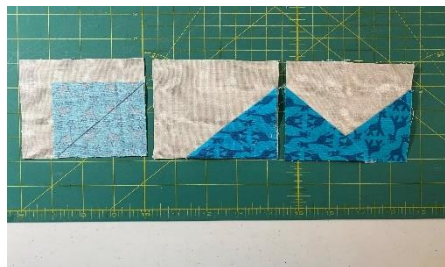


Thank you for helping to make quilts for local charities! Please use whatever scrap fabric you have on hand. Finished blocks will be sewn together during our Philanthropy day planned for November 2020.

For each block, you will need:

- 8 - 4" squares in background fabric
- 1 - 4" square in for center
- 8 - 3" squares in contrasting fabric for star points

On 4 background squares, place a 3" square in a corner, right sides together and sew corner to corner. Trim the underlying corner and press open. Place another 3" square in an adjacent corner and repeat (modified flying geese with no points to match, yeah!).



Layout squares as shown and sew the squares into 3 rows. Then, sew the 3 rows together and you're done! Your block should be approximately 10.5" inches square.

Leadership.....

Groundhog Day

I don't know about you, but it is starting to feel a lot like Groundhog Day. While this is one of my all-time favorite movies, I never thought I would wake up expecting to hear Sonny and Cher singing "I've Got You Babe" on my clock radio! At one point in the movie, the main character, Phil, asks, "What would you do if you were stuck in one place, and every day was exactly the same, and nothing that you did mattered?"

And here we all are, entering week 7 of Stay at Home orders, facing a crisis of unimaginable proportions – and, like always, Phil's question is everyone's question. What we are experiencing is not the same as having a free day. The uncertainty of life around us makes my mind go from one thing to the next, and I often find it hard to focus, hard to be creative. I ask myself if I will I look back on this time and wonder what, if anything, I accomplished after so many long days at home.

But then I am reminded to be gentle with myself. I am making masks – kind of boring, but it feels good to be doing something helpful and useful. And I am finishing a big hand quilting project – the perfect thing while sitting in front of the television watching Netflix. And while I haven't started a new quilt, at least some ideas are starting to percolate in my mind.

Annie Dillard once said, "How we spend our days is, of course, how we spend our lives." And my old friend Austin Kleon reminds me that "the creative journey is not one in which you're crowned the triumphant hero and live happily ever after. The real creative journey is one in which you wake up every day, like Phil, with more work to do."

May all of us spend these days in good health, and may we remember to be grateful for all that we have. And may we each find a way for our creativity flourish.

Barbara Marom-Pollack
Vice President



Linda Lardy	May 9
Gwenn Oki	May 13
Pam Overton	May 13
Glenda Avery	May 16
Vicki Fisher-Lerer	May 22
Madhu Mandavia	May 29
Paula Brady	May 30
Karynn Dittmar	May 31



See? It was never
fabric hoarding

it was pandemic planning



TREASURER

Karynn Dittmar, Treasurer

OPENING BALANCE AS OF 6/1/19		8439.78
INCOME		
Membership Dues / Donations	3350.00	
Workshop Fees	4955.00	
Bank Adjustment	0.00	
Guest Fees	0.00	
Fabric Sale Fundraiser	625.25	
Amazon	144.55	
TOTAL INCOME		9074.80
EXPENSES		
Workshop Expense	5903.87	
General Meeting Expense	2817.50	
Charitable Contributions	650.00	
Administrative Expenses	417.96	
Mileage reimbursement	262.00	
SCCQG Insurance	290.50	
Website	220.25	
PO Box Rental	154.00	
Philanthropy / Ed. Expense	161.62	
Printing / Promotion / Admin.	32.07	
Square Up Fees	43.56	
Government Fees	0.00	
TOTAL EXPENSE		10953.33
NET INCOME		-1878.53
CLOSING BALANCE as of 4/28/20		6561.25

MEMBERSHIP

Hope you are all doing well. Since we won't be having a May meeting membership renewal fees will be deferred until further notice. We're hoping for August but it's still wait and see what develops between now and then. All members will still continue to receive their monthly entertaining and informative newsletter so please be sure to read it and follow the news updates.

I hope you are all taking advantage of this time to do some quilting or masks or whatever makes you happy. In the meantime, I know we all miss getting together with one another.

Stay well.
Luann Jaffe
Membership



Easy Money for WQ:

amazon smile

<https://smile.amazon.com/ch/27-3145733>

Support Westside Quilters when you shop on Amazon by clicking on this link. Please make sure you are logged into your smile account. Amazon Smile is a free program and you'll find the same low prices, vast selection and convenient shipping options as Amazon.com and Amazon will make a donation to Westside Quilters

If you have any problems, please contact Karynn Dittmar, Treasurer.

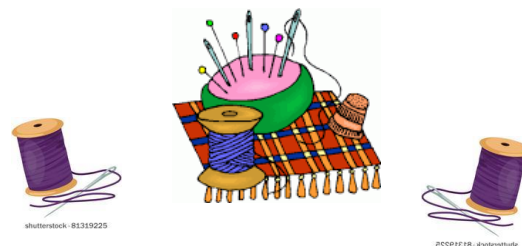
WEBSITE and Social Media:

Just a reminder WQ that we would love to receive photos of what you are currently working on for our Virtual Quilters' Showcase (Show and Tell) on our Facebook and Instagram pages. Let's keep our Community communicating even though we can't be together right now. Please email photos to Sally Wright at westsidequilters@yahoo.com or post them yourselves as a visitor to the WQ FB page.

We'll also be adding a Virtual Quilters Showcase page to the WQ website in May instead of having Show and Tell at our cancelled meeting, so send me your photos!

Thanks!

Sally Wright, Website Manager



WORKSHOP REGISTRATION

First, please email your intent to attend a workshop to: Programs@WestsideQuiltersLosAngeles.org at the **WQ website**, choose *Calendar* and scroll down to individual workshops. See the link to the Workshop Registration Form (which you can fill in on-line and then print) and the supply list. **See the workshop no-refund policy (substitutions allowed) shown on the Workshop Registration Form.**

WQ will hold your space at the workshop for 14 days to allow time to mail Registration Form and payment to the WQ post office box. For last-minute registrations, contact the Program Chair ASAP. **Credit cards/debit cards now accepted.** Non-members pay a \$15.00 surcharge. Supply lists for all classes can be found on the Calendar page at www.WestsideQuiltersLosAngeles.org. The class sessions are from 9:30am to 3:30pm.



Spirit of Philanthropy - Surgical Masks

Love my Mask

Can even be used with construction mask. So far made 28 for LAPD officers.

Pat K



Face Masks - Over 100 delivered to LAPD Pacific Division with cookies **Pat K.**

I making the ones with pockets. They take time, but we will be wearing them for at least a month. I use the pattern on

www.craftpassion.com They cover your face better than the pleated ones. Uses two layers of prewashed Cotton. Three sizes available.

Pat K



Here's a pic of some of the masks I made,

Thanks again.
Nancy N



Hi everybody!

I stopped counting how many masks, but estimate somewhere between 40-50. And still making them. The masks take no thought, but it feels good to be doing something useful.

Hope all of you and yours are staying healthy. Looking forward to the day we can get together again!

Barbara M-P



Lisa D

I've been working on masks too - here are a few I sewed.

Take care all.

Terrie D



I used the pattern in the newsletter, thx
Virginia M



I've been making masks for friends, family and my doctor neighbors medical facility.

Luann



Keeping busy sewing face masks, made about 60.

Started with the pattern "By a Nurse for a Nurse", now using the pattern that was published in the last (and this) WQ newsletter.



Making masks. Hope you are all well.

Patti P



Using "Sturdy Garden Twist" inserts at the bridge of the nose for a tighter fit.

Debbie N.



Each week I bake cookies and now will have masks for Pacific officers.

Pat K



SEWING IS MY SUPERPOWER.



Calls for Entry, May 2020

As of now in late April many quilt shows and textile exhibits have canceled or postponed due to the virus outbreak. So, from my experience this advice - if you plan on entering a show or exhibit in the near future make sure that the event is going on as planned before you shell out cash for an entry or send your work. For those of you who entered quilts for International Quilt Festival Long Beach, according to Quilts Inc. they are still actively planning it, but will have the final word around May 15th.

For some great information from a veteran on how to get your work shown see this blog entry from Sue Bleiweiss <https://suebleiweiss.blog/2018/06/14/getting-your-work-out-there/>

I also recommend this blog post from Lyric Kinard on how to choose venues to display your work - <https://lyrickinard.com/2019/05/showing-your-work-choosing-venues/> In fact, there is a whole series of blog posts on getting your work out there that is well worth your time.

Here are some suggestions for quilt entry photography from International Quilt Festival.

[PHOTOGRAPHING YOUR QUILT FOR SUBMISSION](#)

Continuing our notifications for ways to display your quilts and textile pieces to a wider audience... Entering shows is not difficult, but to begin here are a few guidelines:

- Always make sure you read everything in the call including the calendar, requirements, rules, etc. Especially the rules! Will save headaches and disappointment later on.
- Keep a record on your entries so you won't be caught with a quilt needing to go two places at once. Having to remove a quilt from a show or exhibit because you misread the exhibition dates is a no-no. Ask me how I know...
- Having a great photo of your quilt - straight on, in focus, not on a bed or held up showing hands and feet, super important. There is lots of great info on quilt photography on line. Google!
- Don't be intimidated or depressed by a rejection! There are lots of different reasons why a quilt doesn't fit into a specific show. It is usually not because your quilt is bad!

The calls below are just a sample of the many opportunities out there. For more search "Fiber Art Calls for Entry" or "Quilt Calls for Entry"

Looking ahead to the spring here are some opportunities to show your work at the returning Long Beach Quilt Festival <http://quilts.com/enter-a-quilt.html>. Long Beach deadlines have changed and vary - see below. Here's the link to enter any of these Long Beach exhibits. <http://www.quilts.com/enter-a-quilt.html>

****The Call for Entry for the main judged show at Houston Quilt Festival "Quilts: A World of Beauty" is now open! ****

The rules and online entry form can be found at <https://www.iga-judgedshow.org/page.php?ID=3>

The entry deadline is May 23, 2020

Here are the Special Exhibit Calls for international Quilt Festival Houston 2020. Deadlines are below. You can get a start! <http://www.quilts.com/enter-a-quilt.html>

****NEW - QUARANTINE QUILTS****

Are you currently in self-quarantine or otherwise isolated due to the coronavirus threat? Author, teacher, and Texas Quilt Museum Curator Dr. Sandra Sider has begun work on the book Quarantine Quilts: Creativity in the Midst of Chaos. If you are working on a new quilt about the virus—or simply to save your sanity in these uncertain times—Sandra would like to consider your work for the book. Your quilt does not have to be about the virus. A total of 50 to 60 artists will be featured in the book, with approximately 25 being selected for a special exhibit at Houston's International Quilt Market & Festival in 2020. Let's turn this unprecedented experience into something positive for quilting and quilters like YOU. And half of the book's royalties will be donated to Doctors Without Borders.

Entry Deadline June 30, 2020

FINE FEATHERED QUILTS

A selection of Feathered Star and Princess Feather quilts will make a powerful statement as an exhibit at International Quilt Festival, Houston and as a book whose profit will be donated to the Texas Quilt Museum.

We are interested in sharing antique, or modern, newly made, inherited, bought, etc., with any techniques—piecing, appliqué, embroidery, photo transfer, wholecloth and/or manipulated fabric, etc.

- There are two categories: Yesteryear – quilts made prior to 1930 and Today – quilts made in 1930 and after.
- Limit five (5) entries per person or group.
- Each work must measure at least 50 inches (130 cm) on each side.
- The quilt cannot be larger than 86 inches (218.44 cm) ON A SIDE.
- We would like the participating works to be available for three years of travel, from August 2020 through August 2023.
- *Entry deadline May 7, 2020*

HANDS ALL AROUND

Artists from all around the world incorporate influences from their own cultures into the design and technique of their art quilts.

- Limit two (2) entries per person.
- Quilts must be a minimum of 36" (91 cm) wide and maximum of 108" (274 cm) wide.
- No more than 90" (228 cm) in length.
- Made between January 2017 and February 2020.
- The participating works must be available for two years, from June 2020 through September 2020.
- *Entry deadline May 7, 2020*

HARRY POTTER QUILTS

We love Harry Potter! If you do too, why not enjoy one of the free Harry Potter-themed quilt patterns available online or use your magical imagination and submit a quilt following the below rules. These quilts should feature characters, themes, or elements from the world of Harry Potter books and movies. These are to make and enjoy and show, not to sell, out of respect of JK Rowling's creativity and intellectual rights.

All styles traditional, modern, and art are acceptable for this quilt call.

- Limit three (3) entries per person.
- Quilts must have been made between January 2017- March 2020.
- Each work must measure at least 44 inches (130 cm) on each side.
- The quilt can be NO LARGER than 86 inches (218.44 cm) ON A SIDE.
- The participating works must be available for two years, from June 2020 through September 2022.
- *Entry deadline May 11, 2020*

HISTORY AND READING QUILTS

The quilts for this call should reflect history and/or reading instruction. Quilt artists are encouraged to illustrate their History or Reading (book) quilt, in its simplicity and/or its complexity in answer to this call.

The selected pieces will not only feature the quilt art, but hopefully open a lively discussion on the amazing world of history, or an event in history, and reading (books).

- All styles traditional, modern, and art are acceptable for this quilt call.
- Limit three (3) entries per person.
- Each work must measure at least 50 inches (130 cm) on each side.
- The quilt can be NO LARGER than 86 inches (218.44 cm) ON A SIDE.
- The participating works must be available for two years, from June 2020 through September 2022.
- *Entry deadline May 21, 2020*

THE MATH AND SCIENCE OF QUILTS

In high school and college, most of us take math and science courses because they are a basic requirement and we like to think we won't need it or use it. As quilters, we use both constantly in making our quilts without consciously thinking about it. The fibers we work with (the science) frame the entire process. We use math to determine the size and shape of the quilt, and the pieces.

- All styles traditional, modern, and art are acceptable for this quilt call.
- Limit three (3) entries per person.
- Each work must measure at least 50 inches (130 cm) on each side.
- The quilt can be NO LARGER than 86 inches (218.44 cm) ON A SIDE.
- The participating works must be available for two years, from June 2020 through September 2022.
- *Entry Deadline May 30, 2020*

QUILTED COMICS AND SCI-FI 2020

Theme: Entries are quilts on the themes of comic books, science fiction, fantasy, and pop culture. Did you grow up watching "Batman," "Superman," or "Star Trek?" Love the Avengers or Star Wars movies? Dug into the Harry Potter books? Are you playing your children's video games when they are at school? Now's your chance to create a quilt that portrays your love of super heroes, villains, fantasy, comic book, or anime characters to be on display at the International Quilt Festival 2020.

- All types of techniques are acceptable.
- You may enter up to three (3) quilts per person.
- Each work must measure at least 40 inches (130 cm) on each side. The quilt cannot be larger than 86 inches (218.44 cm) ON A SIDE.
- Quilts submitted for this exhibit should have been completed in the past five years or less.

SCHOOLHOUSE QUILTS

The Schoolhouse block has been a favorite of traditional quilters for over a century. The quilt block has been known by several names including Old Kentucky Home and Old Folks Home. There are many versions of the block design available. Whether you decide to use the traditional design or a current interpretation, we want to see it.

- All styles traditional, modern, and art are acceptable for this quilt call.
- Limit three (3) entries per person.
- Each work must measure at least 50 inches (130 cm) on each side.
- The quilt can be NO LARGER than 86 inches (218.44 cm) ON A SIDE.
- The participating works must be available for two years, from June 2020 through September 2022.
- *Entry Deadline May 28, 2020*

And more around the country this summer and fall:

AQS Charleston *Entry Deadline June 5, 2020.* <http://www.cvent.com/events/2020-aqs-quiltweek-charleston-contest/event-summary-128450e055184e3c81a5cda152ecca18.aspx>

Princess Diana Cherrywood Challenge 2020

<http://cherrywoodchallengeentry.com>

Our challenge is to take inspiration from Diana, Princess of Wales, to create your own unique quilt using a limited color palette: pink and white. We encouraged you to push yourself creatively, think outside the box and create new fiber art. The contest is open to anyone and everyone. All the quilts are the same color, fabric, size and theme.

Entry Deadline July 1, 2020

World Quilt Competition - Mancuso Show Management <https://www.quiltfest.com/upcoming-shows-and-events/world-quilt-new-england/httpswww-quiltfest-comupcoming-shows-and-eventsworld-quilt-new-englandhttpswww-quiltfest-comupcoming-shows-and-eventsworld-quilt-new-englandenter-the-quilt-competitionenter-the-world-quilt-competition-u-s-entries-onlyenter-the-world-quilt-competition-u-s-enter-the-world-quilt-competition-u-s-entries-only/>

~~*Entry Deadline July 16 Has been Cancelled*~~

A Better World: envisioning the future (IQF Houston, TX)

Entry Deadline Spring 2021

The world is changing on every level, and as we navigate these challenging times, we will have important decisions to make about what our post-corona world will look like. Can we work for cleaner air and water, less carbon dioxide, and cleaner energy supplies? Can we help the millions of people worldwide who do not have enough to eat, or adequate shelter? Can we work for racial and gender equality, and living wages? Can we help those with mental health issues, disease and disabilities? Can we wage peace instead of war? Think about the changes you would like to see in the world, and start planning a piece to enter. We can't wait to see what you create!

Susan Brubaker Knapp and Lyric Kinard are curating this show now postponed to Quilt Festival Houston 2021. This change should give you lots of time to work on a piece to enter next spring. And with everything that is happening right now in the world because of the corona virus, what better time to "envision the future"?

Questions? Contact Sally Wright at sally@sallywrightquilts.com





A NEIGHBORLY GUILD CALENDAR

A NEIGHBORLY GUILD CALENDAR	
May 2020	
May 1 & 2 Westside Quilters www.WestsideQuiltersLosAngeles.org	<u>Shawnee Miller</u> Lecture: Workshop: Thread Play Sampler
May 6 Santa Monica Quilt Guild www.santamonicaquiltguild.org	<u>Sue Rasmussen</u> Lecture & 1/2-day workshop
May ?? Simi Valley Quilt Guild www.simivalleyquiltguild.org	<u>Meeting - 2nd Wednesday of the month</u>
May 11 LA Modern Quilt Guild www.lamqg.org	<u>Meeting</u> Weekend sew
May 13 & 16 Glendale Quilt Guild www.glendalequiltguild.org	<u>Lloyd Askew</u> Lecture Workshop
May 17 African American Quilters of Los Angeles www.easysit.com/aaqla	<u>Meeting 3rd Sunday of every month</u>
May 19 & 20 South Bay Quilters Guild www.southbayquiltersguild.org	<u>Meeting</u> Workshop: ???
June 2020	
June ??? Santa Monica Quilt Guild www.santamonicaquiltguild.org	
June ??? Westside Quilters www.WestsideQuiltersLosAngeles.org	
June ??? Simi Valley Quilt Guild www.simivalleyquiltguild.org	
June ??? LA Modern Quilt Guild www.lamqg.org	<u>Meeting - 2nd Monday of the month</u>
June ??? Glendale Quilt Guild www.glendalequiltingguild.org	
June ??? African American Quilters of Los Angeles www.easysite.com/aaqla	<u>Meeting – third Sunday of the month</u>
June ??? South Bay Quilters Guild www.southbayquiltersguild.org	
June ??? Orange County Quilters Guild www.orangecountyquiltersguild.com	

Cancelled

Probably Cancelled



OUT AND ABOUT

- ✂ Safer at Home
- ✂ Meet the Teachers, originally scheduled for April 18, has been moved to September 12. The next meeting of the So. Calif. Council of Quilt Guilds is currently scheduled for July 18 in Downey.
- ✂ Orange County Fair canceled
- ✂ Sisters Outdoors July Quilt Show – cancelled

See the Speaker Calendar of the Southern California Council of Quilt Guilds for additional events. Go to www.sccqg.org scroll down to the bottom of the homepage and click on the box “Speakers” and see other SCCQG guilds and speakers into 2020.



WQ Member Articles and News:

MODERN QUILT GUILD SHOW

By Betsy Barker

The annual convention for the Modern Quilt Guild was held in Austin, Texas in February. Victoria Findlay Wolfe (who won best in show at the first Quiltcon) was the featured quilter. I bought templates for Victoria’s winning design for an updated traditional wedding ring pattern. Because I’ve been quilting for many years, I like the freedom of incorporating traditional, art, and modern techniques into my quilting projects.

Out of all of Victoria’s quilts at the show, my favorite was “I’m not perfect and that’s ok”. It’s great that she recognizes that we are all imperfect human artists. This quilt looked very Amish, as it used limited, muted solid colors. The half square triangle design is also reminiscent of traditional Amish patterns. The quilt uses wonky pieced block letters with the quote part of the design for the top. Each of the local MQ guilds produced a charity quilt focused on text for the show, and this is a trend I’m inspired to use in my next quilts.

My quilting buddy and I headed to Victoria’s lecture, and ended up in the elevator with her. I asked her about her dog who chewed up some of her quilts and her couch (as seen on her social media). Her recent photo feed shows her cuddling the dog, so (like all good pet parents) her dog has been forgiven.

To see more photos of most of the show quilts, check out the Los Angeles Modern Quilt Guild Facebook page. Look for the Quiltcon 2020 album to see quilts, descriptions, and close-ups of superb quilting.

The 2021 Quiltcon will be in Atlanta, Georgia, with Phoenix, Arizona as the site for 2022. I’ll be signing up early to get classes (and the prompt registration goody bag). What will be the new trends at these quilt shows?

Betsy (Janet) Barker
Interactive Media Development
Quilt Artist

A few projects WQ members are working on...

Pat Karasick

Cakewalk quilts in 2 different fabrics, the top one was made by **Madhu Mandavia**. Quilts from the Heart quilted these on the Long arm at Sewing Arts and Pat finished the binding.



Mystery Quilt #1 K



Quarantine shamrock – One block each night



Karynn Dittmar

The flower quilt is a *Claudia Pfeil* mystery quilt – *Phearless Corona Pfighters*.

The other is a *GE Design* quilt along, call *Elvira*. She names all her quilts with girls names.



Sally Wright

Thunderstruck
Quilt pattern by
Victoria Findley
Wolfe

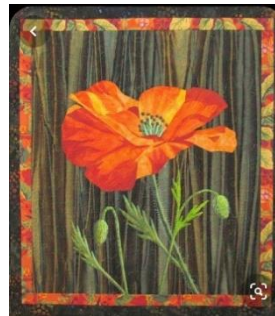


Dear WQ,

While we are still home being socially distant and safe, there is another opportunity for a Mystery Quilt project. See the message from Pam Overton below which she sent out this morning. Westside Quilters will go ahead and foot the bill for those participating in this one. So please go ahead and contact Pam O at Pam@travelingquilters.com if you would like to participate.

And don't forget to also send photos of your progress on this or any of your projects right now. We would love to feature them on Facebook or Instagram. Let's see a virtual Show and Tell while we can't be together. Send to me at westsidequilters@yahoo.com

Sally Wright
Westside Quilters



Thinking about sewing some face masks, here's a few patterns:

<https://www.youtube.com/watch?v=TL9D6ZFtZHM>
<https://buttoncounter.com/2018/01/14/facemask-a-picture-tutorial/>
https://www.instructables.com/id/AB-Mask-for-a-Nurse-by-a-Nurse/?fbclid=IwAR1FvY64NrA_zoo_gmAxlDBojcoz_NLOmNGi4nGUByCak4BmRPv5h7BvJts
<http://covid-19.gloriahansen.com/sewing.php>

Or try one of the following:



How to make a Face Mask

What you will need

- Cotton fabric, a pretty print is best.
- Rope Elastic, beading cord elastic will work (you may also use 1/8" flat elastic)
- Cut the elastic 7" long and tie a knot at each end (DO NOT knot the ends of the flat)

You can make two sizes: Adult or Child

1. Put right sides of cotton fabric together of Cut 9x6 (Adult) or 7.5 x 5 (Child)
2. Starting at the center of the bottom edge, sew to the first corner, stop. Sew the elastic with the edge out into the corner. A few stitches forward and back will hold this.
3. Sew to the next corner, stop, and bring the other end of the same elastic to the corner and sew a few stitches forward and back.
4. Now sew across that top of the mask to the next corner. Again, put an elastic with the edge out.
5. Sew to the next corner and sew in the other end of the same elastic.
6. Sew across the bottom leaving about 1.5" to 2" open. Stop, cut the thread. Turn inside out.
7. Pin 3 tucks on each side of the mask. Make sure the tucks are the same direction
8. Sew around the edge of the mask twice.

It is so easy to make this.

Be sure any fabric design is placed horizontally.



How to Make an Adult Mask with Ties

Supplies for 1 mask:

- One (1) 8x14 inch piece of cotton fabric
- Two (2) 1.5 x34 inch strips
- Thread & sewing machine

Prepare the mask:

On 8/14-inch piece, right sides together, sew ¼ inch seam, creating tube.

Turn right sides out, press seam and fabric.

Make 3 pleats, approx. 1 inch each in size, using steam or pins to hold. Mask will be approx. 3-3.5 inches in width.

Sew ¼ inch seam on each side of mask, securing pleats.

Trim seam allowance.

Prepare the ties:

Fold in half and press (3/4 inch). Open tieback up.

Fold each edge in to meet middle (3/8 inch/0.375 inch) and press.

Fold in half again, securing raw edges inside and press. Each tie will be approx. 3/8 inch in width.

Assembly:

Align center of tie with side of mask, open tie so edge of mask fits snugly inside. Pin.

Sew tie to mask, seam will be very short, get as close as able while still catching all fabric. You are just attaching the mask to the tie at this point, not sewing the whole tie yet.

Repeat for other tie and other side of mask.

Sew down edges of tie, securing raw edges inside. Seam is very short. You will stitch over where mask is already attached. This is good because it helps reinforce.

Repeat for other tie and other side of mask.

VERMONT

news guide

vermontnewsguide.com

April 6, 2020 Vol. 66 No. 1

P.O. Box 1265 • 4858 Main Street • Manchester Center, VT 05255

tel: 802.362.3535



Illustration by Noah Regan and Joshua Sherman ©Joshua Sherman Productions, LLC. 2020. All Rights Reserved.

We Can Do It!

Iowa artist Noah Regan has referenced Norman Rockwell and Grant Wood in his work during the coronavirus pandemic — and is among artists who has drawn upon the World War II imagery of Rosie the Riveter. (Noah Regan and Joshua Sherman/Vermont News Guide)



Editor's Note:

Social distancing, gardening, walking, sewing face masks, repeat, that kinds sums up my life right now. But being a quilter allows me to spend my day enjoying a much-loved hobby, sewing. As most of you, the most frequent project is sewing masks. I get to play with all my pretty fabric and fun sewing gadgets. My sewing room is a big mess, with stuff all around, it's my happy place! The family knows to stay out! Visiting the room only by invitation.

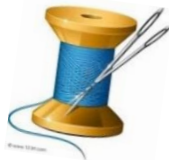
After making about 60 face masks and distributing them to friends and neighbors, I'm allowing myself a break, and I started working on a few quilting projects. Things I have wanted to start for a long time or things that just need a little work to complete. Next time we are together I will need a full 30 minutes of Show and Tell time to share what I've been up to.

I have to share one picture of my neighbor Fabie, who is a physician at Olive View Hospital. I've been making masks for her and her coworkers. She recently requested a scrub cap, so I have branched out. Enjoy the social distancing picture of Fabie modeling her matching scrub cap and face mask set.



Stay Safe and Healthy.....
Happy Stitching,

Debbie Nussbaum
Newsletter Editor



HAPPY
MOTHER'S
DAY!



Next Executive Board Meeting

The next meeting of the Executive Board will be held, TBD, 2020

All members of Westside Quilters are welcome to attend with prior notice to

Pres@WestsideQuiltersLosAngeles.org.

Our Mission

A new kind of guild organized for educational and charitable purposes; to promote cooperation and the exchange of ideas among quilters; to instruct members in methods and techniques of traditional and contemporary creative quilting; to serve mini-groups and their philanthropic endeavors within the community; to inspire personal achievement.

Officers 2018-2019

President	Roberta Walley
Vice President	Barbara Marom-Pollack
Secretary	Terry Dorio
Treasurer	Karynn Dittmar
Program	Pat Karasick, and Linda Lardy
Membership	Luann Jaffe
Newsletter	Debbie Nussbaum
Philanthropy	Nancy Kawahara, Virginia Marshall, and Lisa Drew
Website Manager	Sally Wright

Appointed Positions

Hospitality	Kim Ryan, Matt Randall
Meeting Set-Up/Take-Down	Marianne Simpson Lisa Drew and Sonja Daniel
Photographer	Sally Wright
President Emeritus	Kim Ryan

Mailing Address **Post Office Box 641925**
Los Angeles, CA 90064

Website

www.WestsideQuiltersLosAngeles.org

Facebook **We're on Facebook. Check out the banner on the WQ website home page (lower center).**

Amazon There is a boxed message in the lower center of our website home page giving a direct link to Amazon. By using this link, anything you purchase earns a 4% "dividend" paid directly to WQ. *This only works if you enter the Amazon website from the WQ website link.*

iGive.com This is another way to benefit WQ when shopping on the Internet. Here you need to register (the iGive.com logo appears in the lower center on the WQ website home page and links you directly to iGive.com). More than 800 Internet retailers participate (Barnes & Noble, Bed Bath & Beyond, Enterprise Rent-A-Car, Lancome -- to name a few). Follow the instructions at iGive.com.

Non-Profit Status **Westside Quilters is tax-exempt from Federal income tax under section 501(c)(3) of the Internal Revenue Code, and classified as a public charity under section 170 of the Code, according to the determination letter dated May 26, 2011 received from the Internal Revenue Service. The effective date of exemption is June 17, 2010. Donations to Westside Quilters are fully tax-deductible for individuals and other entities such as corporations, partnerships, trusts; Westside Quilters is qualified to accept tax deductible bequests and gifts or transfers of gifts.**

F.E.I.N. 27-3145733
(Federal Employer Identification Number)

